

# Alto Tunnel Bikeway Corridor Study

Project Number: 1001



## LOCATION

Alto Tunnel Corridor - This project will study a potential alternative route between Mill Valley and Corte Madera, reopening the Alto Tunnel for bicycle and pedestrian use.

## COST

\$600,000

## FUNDING SOURCE

NTPP \$600,000

## COMPLETION DATE

Summer, 2013 (*Estimated*)

## PROJECT DESCRIPTION

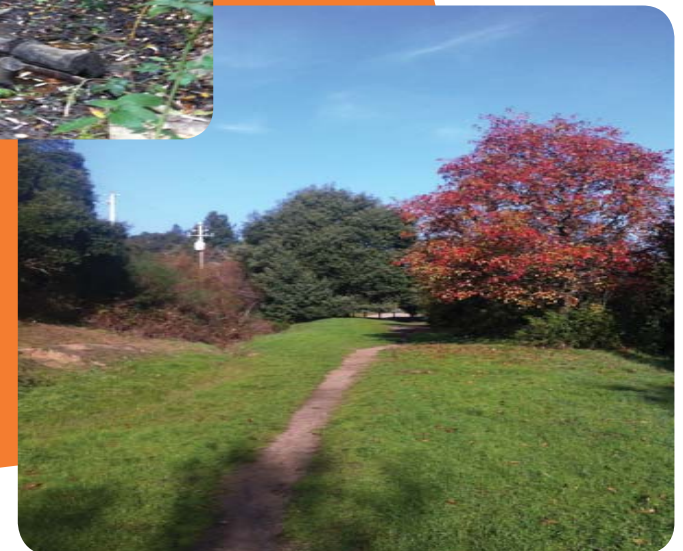
Improving the connection between Mill Valley and Corte Madera for pedestrians and bicyclists was identified as one of the top priority projects in the county, based on public input during the countywide bicycle/pedestrian plan update public workshops in 2006.

A corridor study conducted between 2008 and 2010 was intended to gather information; it was not intended to select a specific course of action, nor was it to eliminate an alternative or identify a preferred alternative. It was not a "plan" but a study of design concepts and technical information related to potential improvements in these three corridors. The initial study did not set policies on which improvements to implement, nor was it envisioned to develop consensus on a particular course of action. The study was conducted with a limited scope to produce technical information in order to help local policy makers to make informed decisions on next steps.

The Board of Supervisors authorized additional federal Non-motorized Transportation Pilot Program (NTPP) grant funds to further refine cost estimates and further investigate



Alto Tunnel north portal entrance.



Path leading to Alto Tunnel's north portal entrance.

*For questions, please contact Ms. Carey Lando, Marin County Department of Public Works, [clando@marincounty.org](mailto:clando@marincounty.org) or 415 473 5078.*

issues identified in the Mill Valley to Corte Madera Bicycle and Pedestrian Study. This additional research will look to further evaluate property and right-of-way issues, as well as collect additional geotechnical information on the condition of the tunnel itself. This information will help to narrow the construction cost estimate contingency levels to achieve a higher level of confidence in how much it would cost if the tunnel were reopened or reconstructed for future bicycle and pedestrian use. Collection of the geotechnical information may or may not necessitate construction of a temporary investigative access way at or near one of the existing tunnel portals. This will depend on access, cost effectiveness and technical feasibility.

### STATUS

The County intends to again diligently work with and involve the public throughout this future study process. County staff are working on developing and refining a study scope of work and will post it to the project website as soon as it is released. It is anticipated that a Request for Proposals (RFP) would be released in fall 2012 for consultant support. The study will likely commence in 2013.

County staff will utilize the Interested Parties email lists from the Mill Valley to Corte Madera Bicycle and Pedestrian Corridor Study for public notifications and information. If you are not on this list and would like to add your contact information for future correspondence; OR if you are on the list and no longer wish to receive project information, please contact the County's Project Manager (*see below, center*).

As with the past study effort, project information is available on the project webpage at:

[http://walkbikemarin.org/projects\\_millvalley.php](http://walkbikemarin.org/projects_millvalley.php)

*Revised June, 2012*

Alto Tunnel  
south portal.



*For questions, please contact Ms. Carey Lando, Marin County  
Department of Public Works, [clando@marincounty.org](mailto:clando@marincounty.org) or 415 473 5078.*