

INFORMATIONAL PUBLIC WORKSHOP#2 - DECEMBER 9, 2009

THREE (3) BIKE AND PEDESTRIAN CORRIDORS CONNECTING MILL VALLEY AND CORTE MADERA

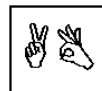
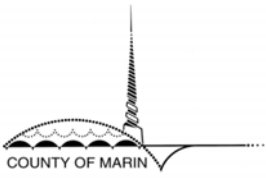
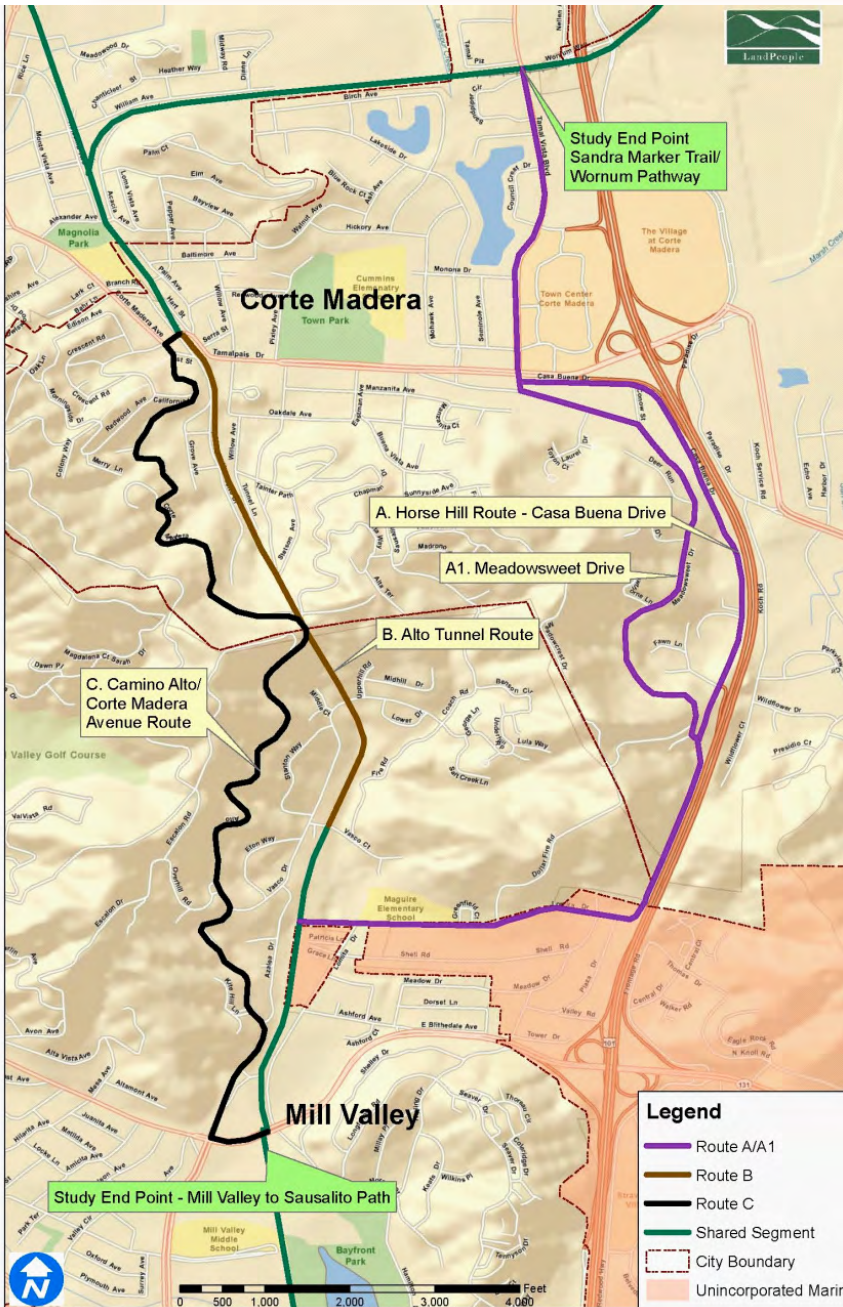
When: Wednesday December 9, 2009
6:30 pm

What: Please join us for a public workshop on a study to improve bike and pedestrian connections between Corte Madera and Mill Valley. This is the final Public Workshop for this effort. Improvement concepts will be presented for each of the three routes. The draft Mill Valley to Corte Madera Bicycle and Pedestrian Corridor Study will be posted to the project webpage approximately 1 week prior to Public Workshop #2. After the workshop, there will be an additional 30-day public input period.

Where:
Edna Maguire Elementary School
Multi-Purpose Room
80 Lomita Drive, Mill Valley



To learn more about the study and to view public information related to the project, please visit the project webpage at:
http://walkbikemarin.org/projects_millvalley.php



All county meetings are conducted in accessible locations. If you require sign language interpreters, assistive listening devices, or other accommodations, you may request them by calling (415) 499-3232 (tty) or (415) 499-6530 (voice) at least 72 hours in advance. Copies of documents are available in accessible formats upon request